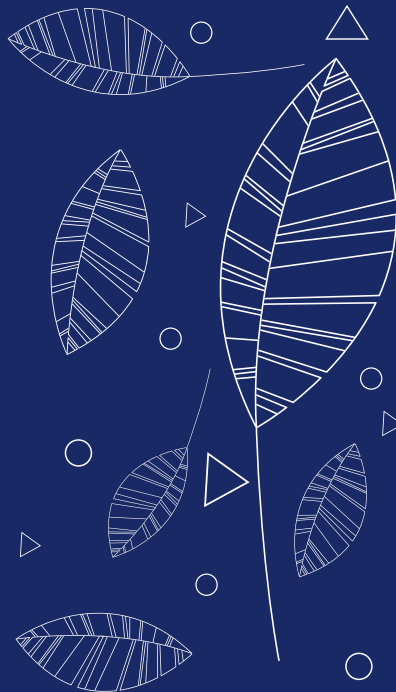


Manufactured and Distributed by:



TERPIFUSE™

BUCKET KIT



THE INSTRUCTION MANUAL

WARNING



KEEP OUT OF REACH OF CHILDREN & PETS.

This product is for use only by individuals who have reached the legal age in your state or province of residence.



OVERDOSE WARNING.

Ingestion of more than recommended dose may cause serious health risks including seizure and possible death. In case of overdose, DO NOT induce vomiting. Contact emergency services or your local Poison Control Center immediately at (800) 222-1222.



FLAMMABLE.

Do not use or store near an open flame.

FIRST AID MEASURES.

Call 911 or seek medical attention should there be any adverse reaction after use of our products.

SAFETY MEASURES.

Use protective gloves and eyewear when handling the solution. Use with adequate ventilation. Follow all instructions carefully. Start with a small test batch to make sure you are satisfied with the results. We are not responsible for any damaged or ruined product.

THETERPENESTORE.COM

Made in the USA. Patent Pending.

09292020



TERPIFUSE™ TIPS

- The flower should be around 50-55% humidity when starting this process. Moist material will not work as well.
- We recommend a maximum of 2 pounds at a time. One bottle of Terpifuse™ Solution can last for up to 5 cycles for a total of 10 pounds. Results may vary depending on your starting material.
- When Terpifusing™, store in a cool, dry place.
- You may use a remote hygrometer to monitor the humidity levels. We recommend calibrating it before use.
- Although the bucket and riser are chemical resistant, we recommend you wash them immediately after you are finished with all your infusion cycles. Dispose of the beads and wash your bucket with dish soap and warm water and let air dry.

SCAN FOR FAQs AND DEMO VIDEO



WHAT THE KIT INCLUDES



5 Gallon
Airtight Bucket



Riser



Mesh
Bag



Terpifuse™
Solution



Gel
Beads



Storage
Labels

INSTRUCTIONS

1 ADD BEADS & SOLUTION

Open the BEADS pack and pour the entire contents into the bucket. Gently pour the entire Terpifuse™ Solution bottle into bucket.

Warning: Avoid splashes by pouring the bottle close to the bottom of the bucket. Eye protection is recommended.

2 ADD THE RISER

Make sure the solution fully coats the beads by giving it a gentle, circular swirl.

3 ADD YOUR MATERIAL

Place the mesh bag over the bucket and add up to 2 pounds of flower. Place the mesh bag into the bucket and close the lid, making sure the lid is sealed correctly. Add an optional hygrometer into the bucket.

4 LABEL THE BUCKET

Fill out the label sticker to keep track of your batches.

5 MIX EVERY 24 HOURS

After 24 hours, mix your flower in the mesh bag to ensure even coverage. Take out your flower when you are satisfied with the infusion. This takes anywhere from 2-5 days and will depend on many factors, such as your material, starting humidity, and personal preference.

6 ADD YOUR NEXT BATCH

Your next batch is ready to begin! Repeat steps 3-5. Make sure to store your Terpifused™ flower in a humidity controlled and sealed bag like you would normally. The Solution can last up to 5 cycles for a total of 10 pounds. Results may vary.

READY FOR YOUR NEXT CYCLE?

Our Terpifuse™ Solution Refill is available on our website.